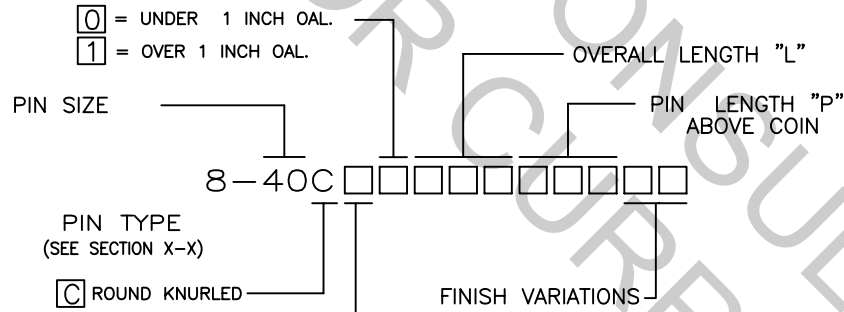


REV	REVISION RECORD	ECN	BY	APVD	DATE
A	INITIAL RELEASE PER EWR 980196	15475	JB	JB	05-15-98
B	UPDATE PER EWR 100819	501049	RJB	RJB	11-00-02
C	UPDATE PER EWR 106570	505814	RJB	RJB	7-18-09

NOTE: UNLESS OTHERWISE SPECIFIED

1. INTERPRET DRAWING IN ACCORDANCE WITH ANSI Y14.5-1982.
 2. ALL DIMENSIONS APPLY AFTER PLATING.
 3. PITCH CONSISTENCY TO BE WITHIN ± 0.005 WHEN THE OAL OF 5 STRIPS, (3.00") LONG ARE MEASURED.
- ⚠ PART TO BE SUPPLIED ON A CONTINUOUS REEL.

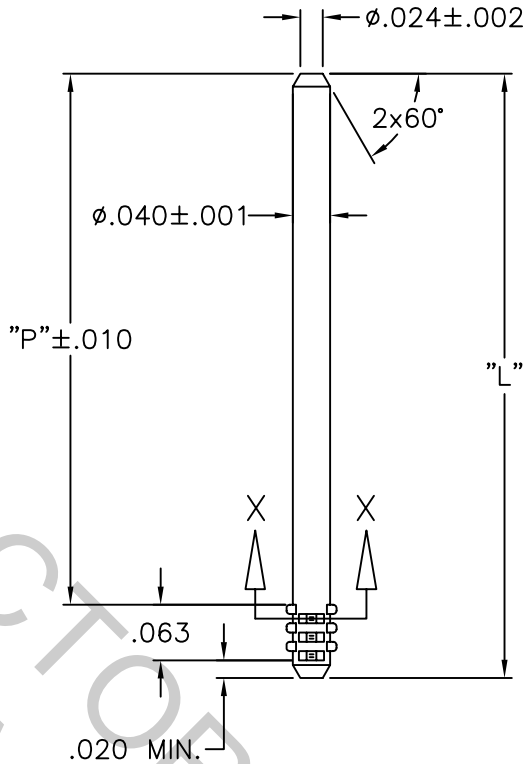
PART NUMBER BREAKDOWN



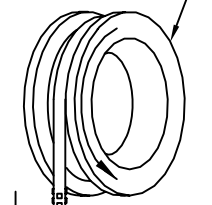
MATERIAL

- 1 = C10200 COPPER ALLOY, FULL HARD
- 2 = C26000 BRASS, 3/4 HARD
- 5 = C51000 PHOSPHOR BRONZE, 3/4 HARD
- 7 = C72000 COPPER/NICKEL/TIN ALLOY

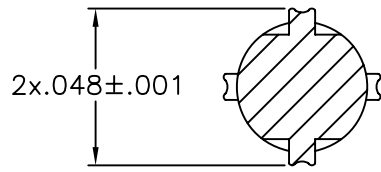
- AA = TIN/LEAD .000120 MIN OVER NICKEL
- BB = GOLD PLATE .000005 OVER NICKEL
- CC = GOLD PLATE .000010 OVER NICKEL
- WW = GOLD PLATE .000015 OVER NICKEL
- DD = GOLD PLATE .000020 OVER NICKEL
- EE = GOLD PLATE .000030 OVER NICKEL
- NN = NICKEL PLATE .000050
- FF = Au .000003 OVER Pd-Ni .000012 OVER Ni
- RR = UNPLATED



⚠ REELING ORIENTATION
AP/2 REEL
(24" O.D. x 20" I.D.)



REELING ORIENTATION



SECTION X-X

CUSTOMER DRAWING

This drawing and the information set forth hereon are the property of Autossplice, Inc. and are to be held in trust and confidence. Publication, duplication, disclosure, or use for any purpose not expressly authorized in writing by Autossplice, Inc. is prohibited.

TOLERANCES UNLESS OTHERWISE SPECIFIED DIMS IN INCHES		AUTOSPlice INC. 10121 Barnes Canyon Road San Diego, California 92121 (619) 535-0077	
DECIMAL: XX = ± 0.01 XXX = ± 0.005	THIRD ANGLE PROJECTION	DATE: 3-15-98	DATE: 3-15-98
ANGULAR: $\pm 3'$		APPROVED BY: BIANCA	DATE: 5-15-98
DENOTES SPECIAL CHARACTERISTIC		TITLE: AUTOPIN/2 DETAIL PART DRAWING	
SIZE: C	FSCM NO: 0AE89	DRAWING NUMBER: C8-40C	REV: C
SCALE: NONE		CAD FILE NO. 08-40C000C	
SHEET 1 OF 1			